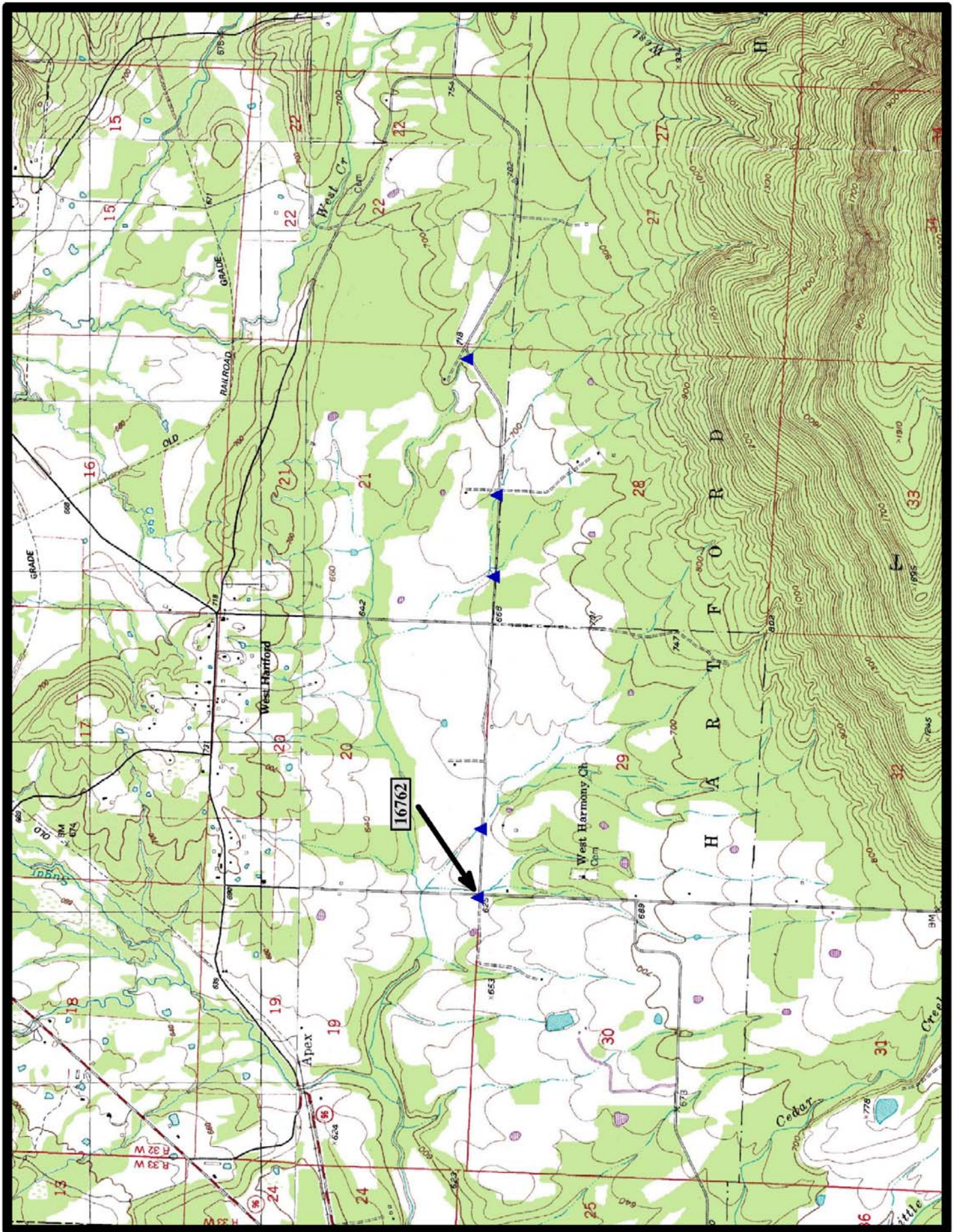




HISTORIC BRIDGE #16762
WEST HARMONY ROAD (Co. Rd. 4)
SEBASTIAN COUNTY
CONCRETE CONTINUOUS SLAB
CROSSES - TRIBUTARY OF CLEAR CREEK
DATE OF CONSTRUCTION - 1940
BUILDER - WORK PROGRESS ADMINISTRATION (WPA)
HISTORIC BRIDGE INVENTORY DATE - 2010
SHPO NUMBER -
HAER NUMBER -
DATE LISTED ON NATIONAL REGISTER -
LAT./LONG. 34:59:26.06, -94:25:24.21

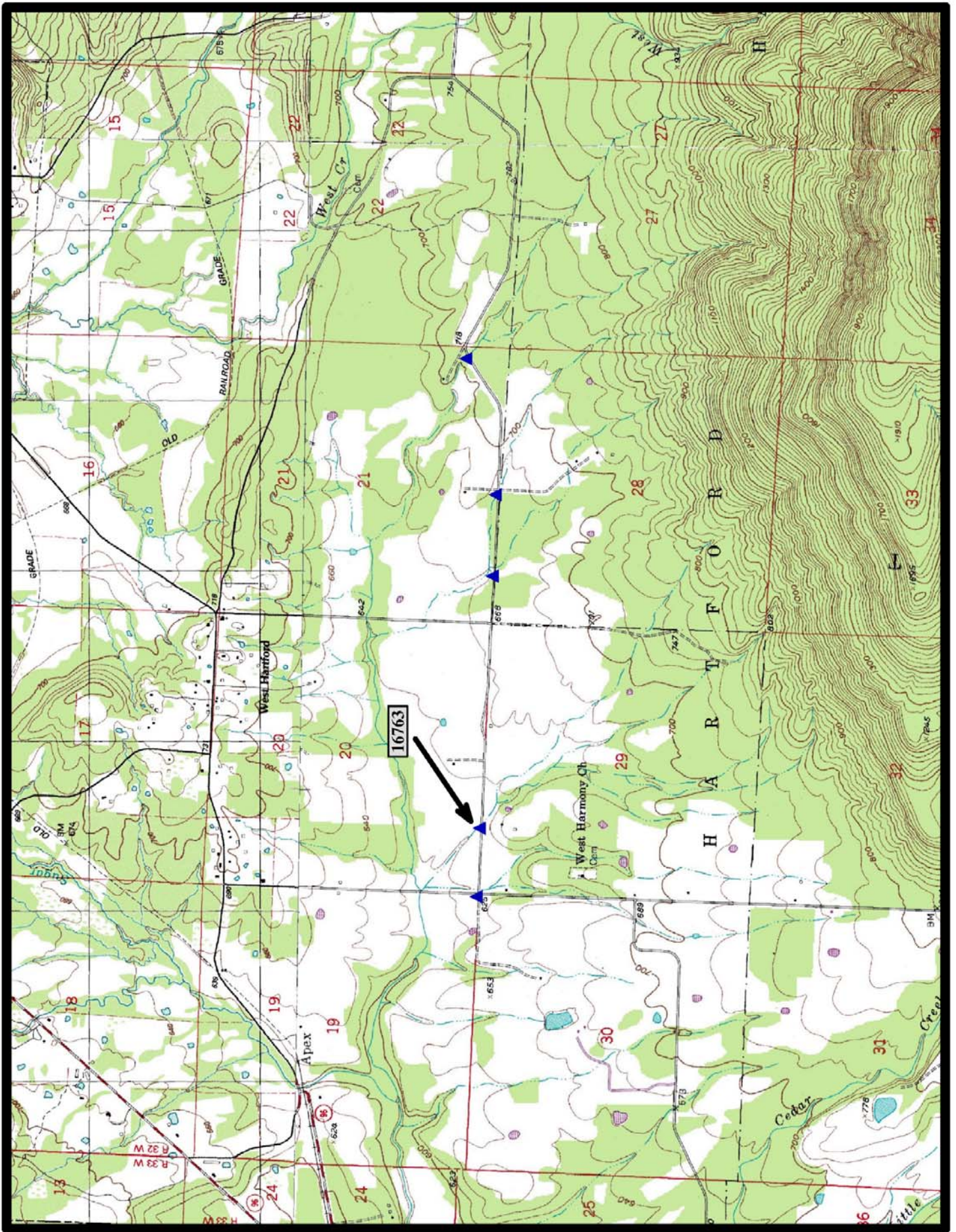


North

Bates 7.5 min. Quad



HISTORIC BRIDGE #16763
WEST HARMONY ROAD (Co. Rd. 4)
SEBASTIAN COUNTY
CONCRETE CONTINUOUS SLAB
CROSSES - UNNAMED CREEK
DATE OF CONSTRUCTION – 1940
BUILDER - WORK PROGRESS ADMINISTRATION (WPA)
HISTORIC BRIDGE INVENTORY DATE - 1995
SHPO NUMBER – SB0455
HAER NUMBER -
DATE LISTED ON NATIONAL REGISTER - 5/5/1995
LAT./LONG. 34:59:25.64, -94:25:08.33

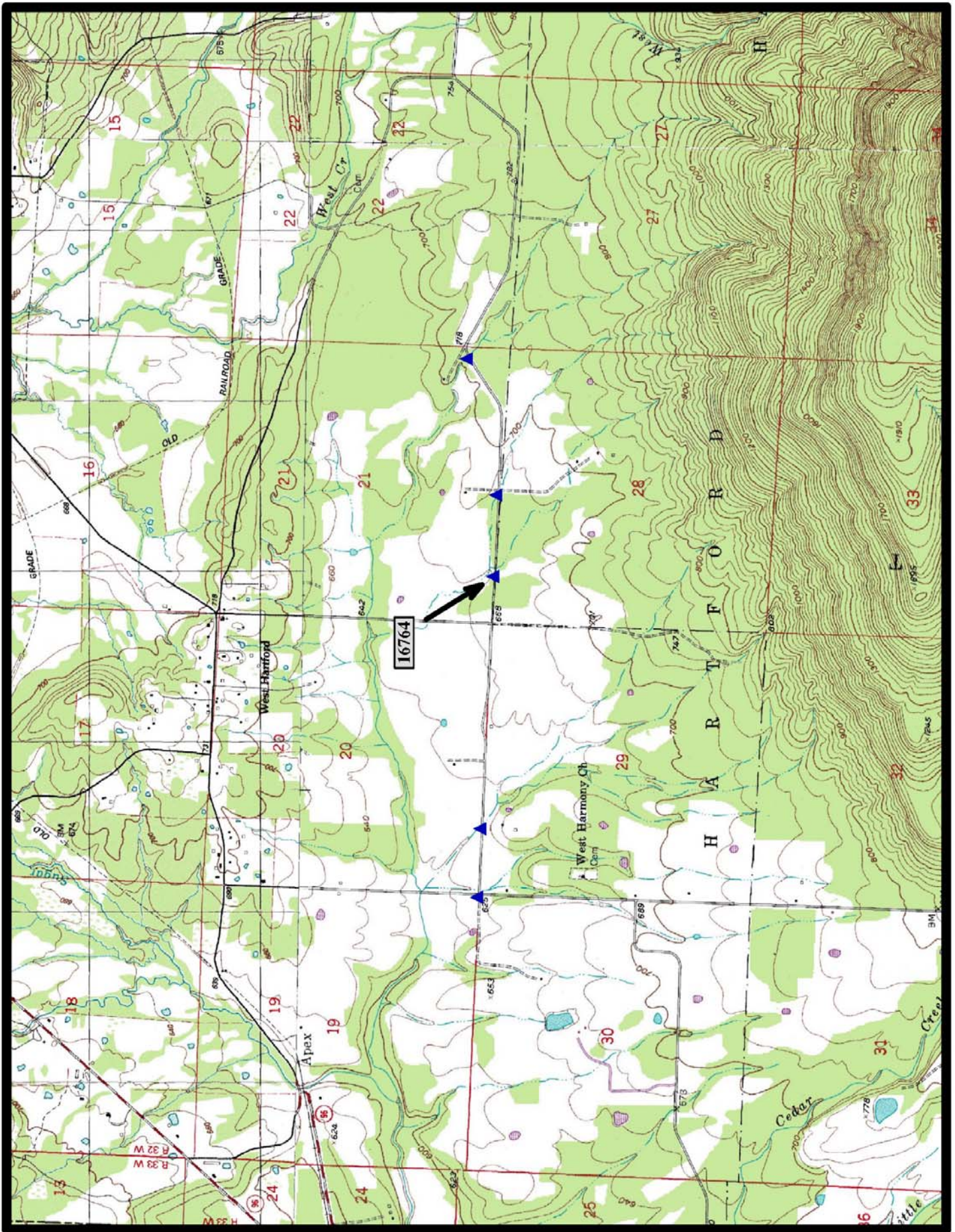


North

Bates 7.5 min. Quad



HISTORIC BRIDGE #16764
WEST HARMONY ROAD (Co. Rd. 4)
SEBASTIAN COUNTY
CONCRETE CONTINUOUS SLAB
CROSSES - UNNAMED CREEK
DATE OF CONSTRUCTION – 1940
BUILDER - WORK PROGRESS ADMINISTRATION (WPA)
HISTORIC BRIDGE INVENTORY DATE - 2010
SHPO NUMBER –
HAER NUMBER -
DATE LISTED ON NATIONAL REGISTER -
LAT./LONG. 34:59:23.91, -94:24:09.92

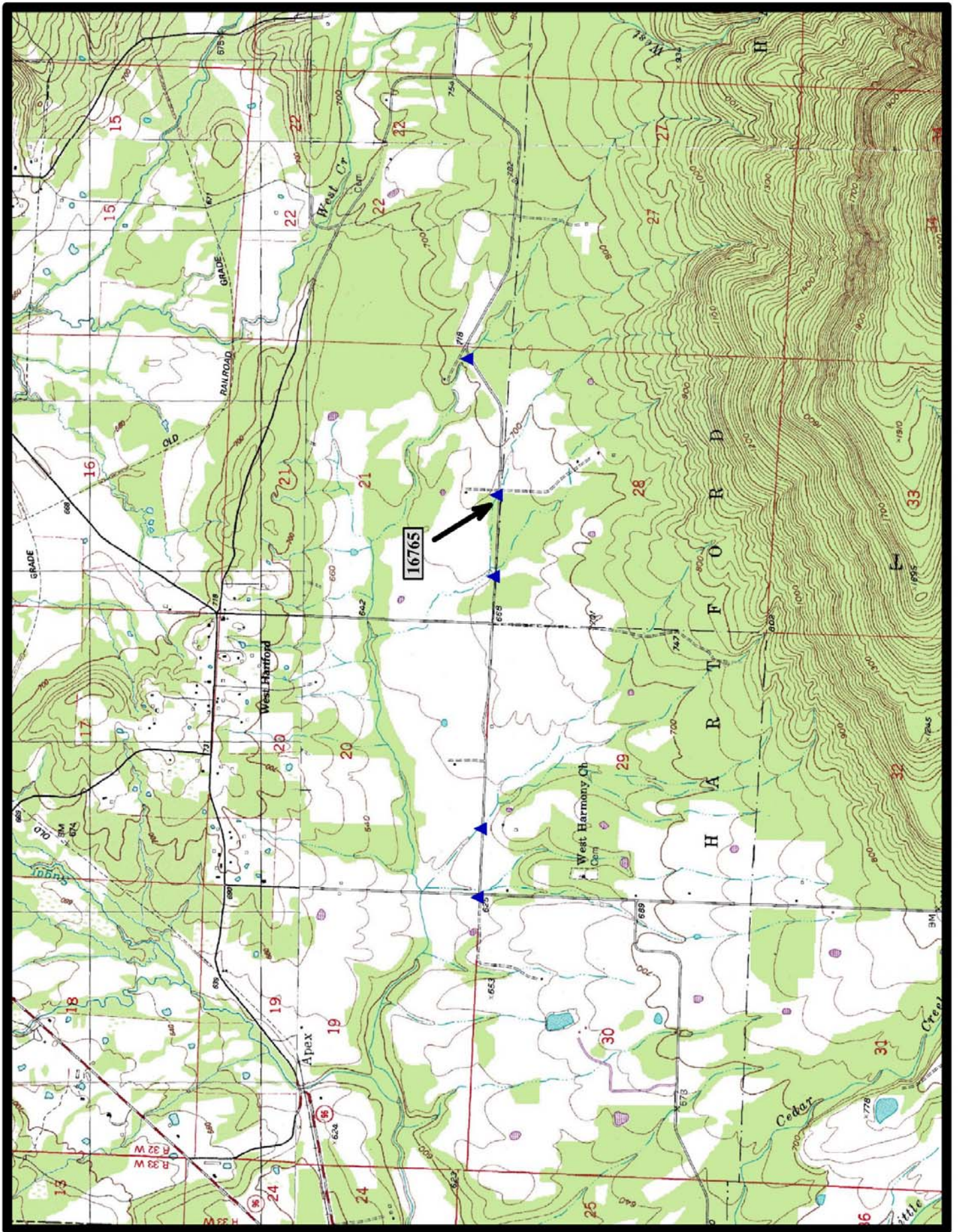


North

Bates 7.5 min. Quad



HISTORIC BRIDGE #16765
WEST HARMONY ROAD (Co. Rd. 4)
SEBASTIAN COUNTY
CONCRETE CONTINUOUS SLAB
CROSSES - UNNAMED CREEK
DATE OF CONSTRUCTION - 1940
BUILDER - WORK PROGRESS ADMINISTRATION (WPA)
HISTORIC BRIDGE INVENTORY DATE - 2010
SHPO NUMBER -
HAER NUMBER -
DATE LISTED ON NATIONAL REGISTER -
LAT./LONG. 34:59:23.57, -94:23:51.07

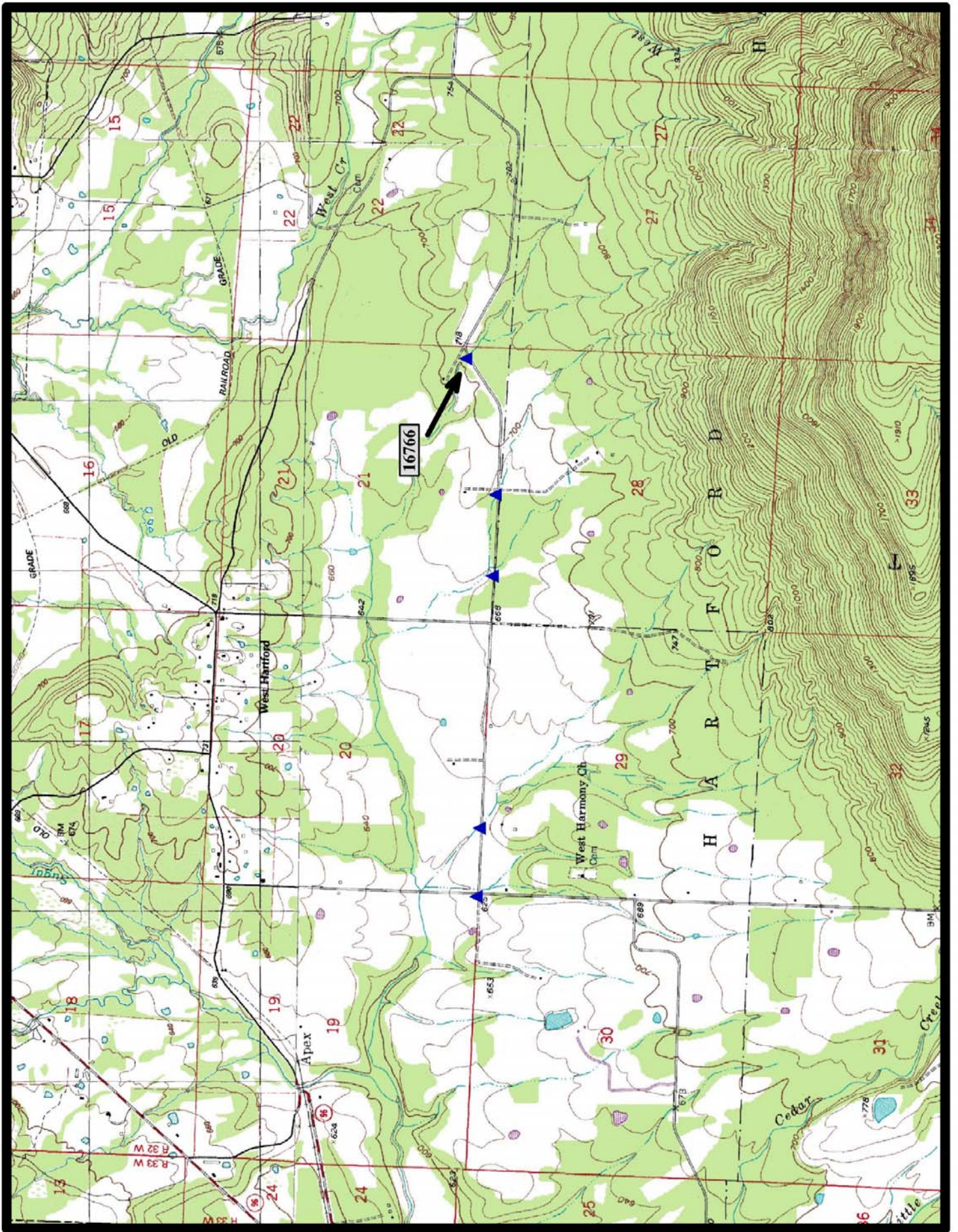


North

Bates 7.5 min. Quad



HISTORIC BRIDGE #16766
WEST HARMONY ROAD (Co. Rd. 4)
SEBASTIAN COUNTY
CONCRETE CONTINUOUS SLAB
CROSSES - UNNAMED CREEK
DATE OF CONSTRUCTION – 1940
BUILDER - WORK PROGRESS ADMINISTRATION (WPA)
HISTORIC BRIDGE INVENTORY DATE - 2010
SHPO NUMBER –
HAER NUMBER -
DATE LISTED ON NATIONAL REGISTER -
LAT./LONG. 34:59:29.54, -94:23:19.64



North

Bates 7.5 min. Quad